



Wesizwe Platinum Limited

The Bakubung-Ba-Ratheo Community Investment Model

*Clr Peter Molelekeng,
Executive Mayor,
Moses Kotane Municipality,
North West Province,
Republic of South Africa*



w e s i z w e



US Visit, July 2006

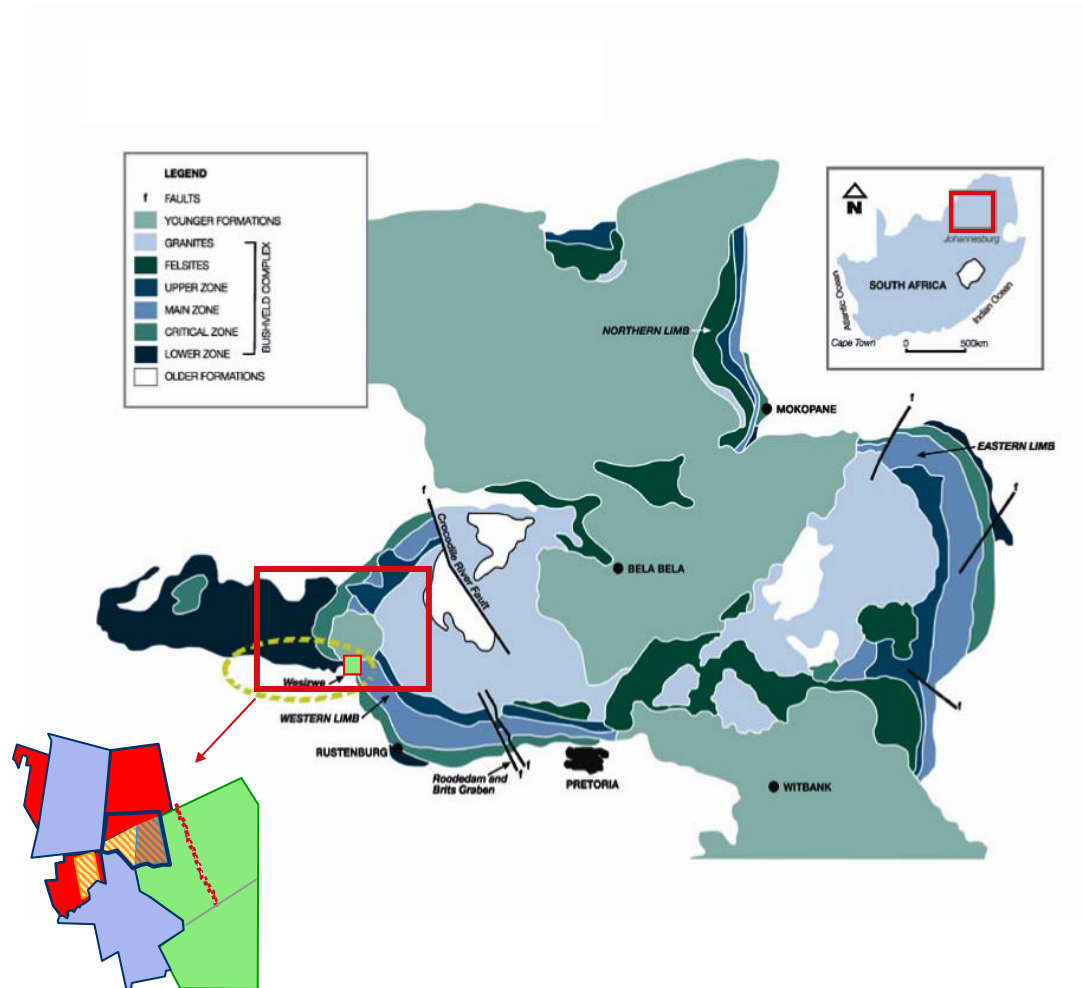
Wesizwe Platinum is a Community-Based Mining Project in the Moses Kotane Municipality, North West Province, South Africa



wesizwe



Royal Bakubung Tribe
Bakubung-Ba-Ratheo



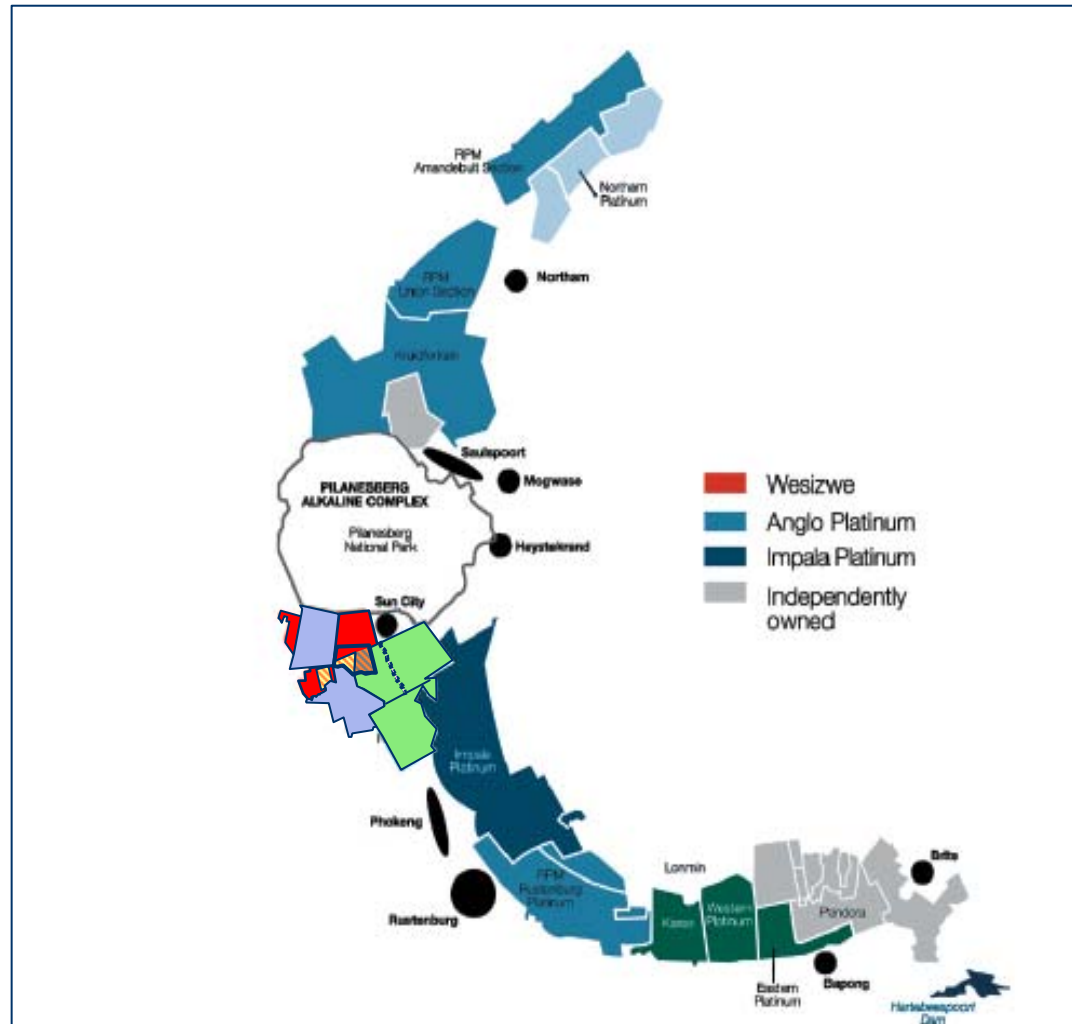
The Western Limb



wesizwe



Royal Bakubung Tribe
Bakubung-Ba-Ratheo



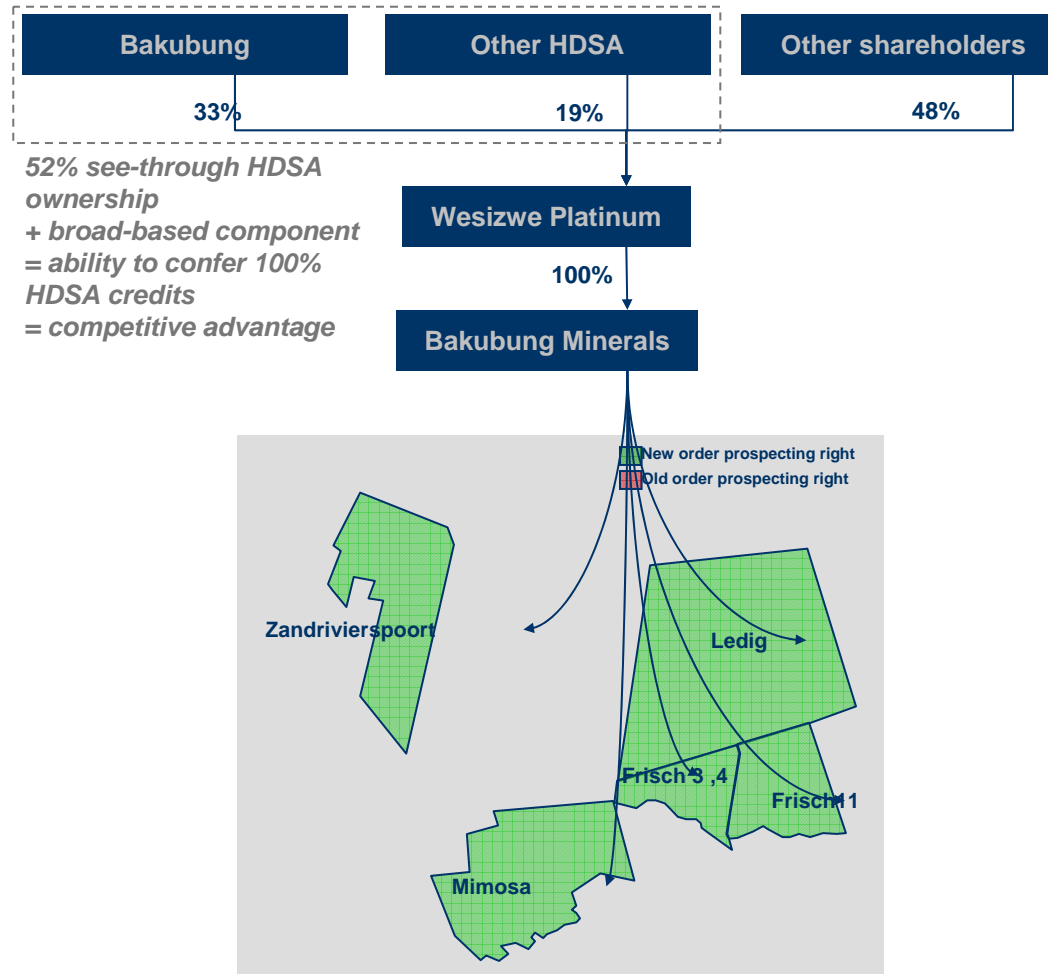
Ownership of the company



wesizwe



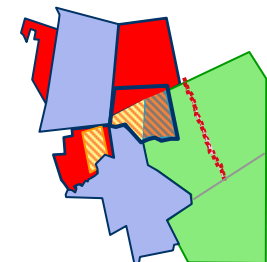
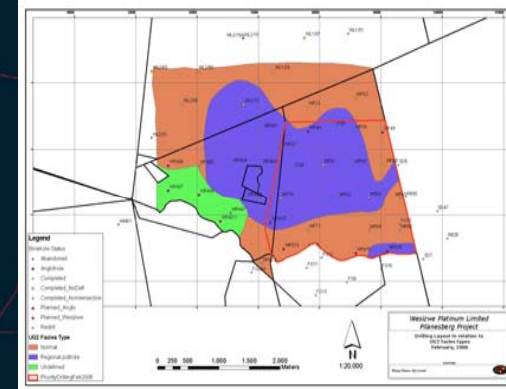
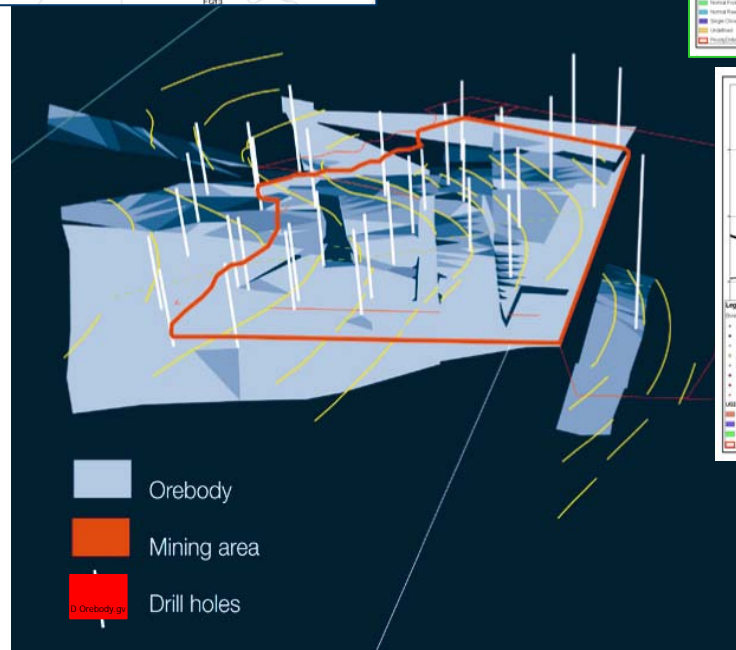
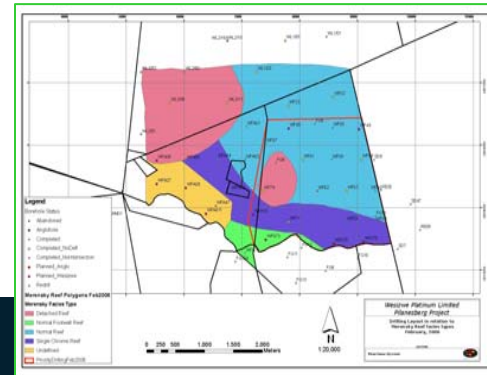
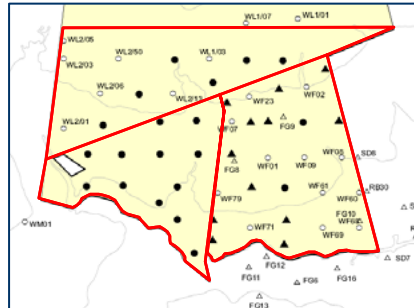
Royal Bakubung Tribe
Bakubung-Ba-Ratheo



The Ore Body: stable, thick and flat lying



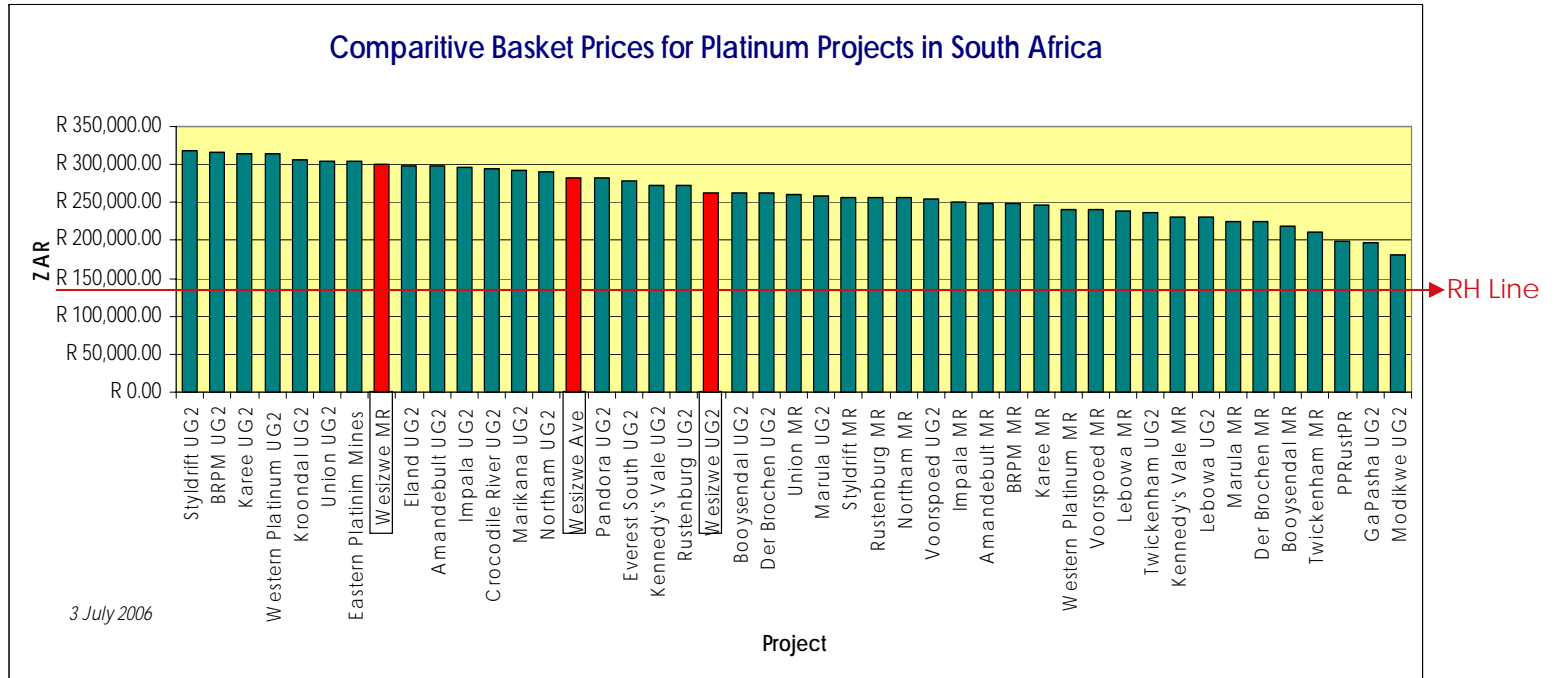
wesizwe



Wesizwe PGM basket price: one of the best in the world



wesizwe



Project metrics



w e s i z w e

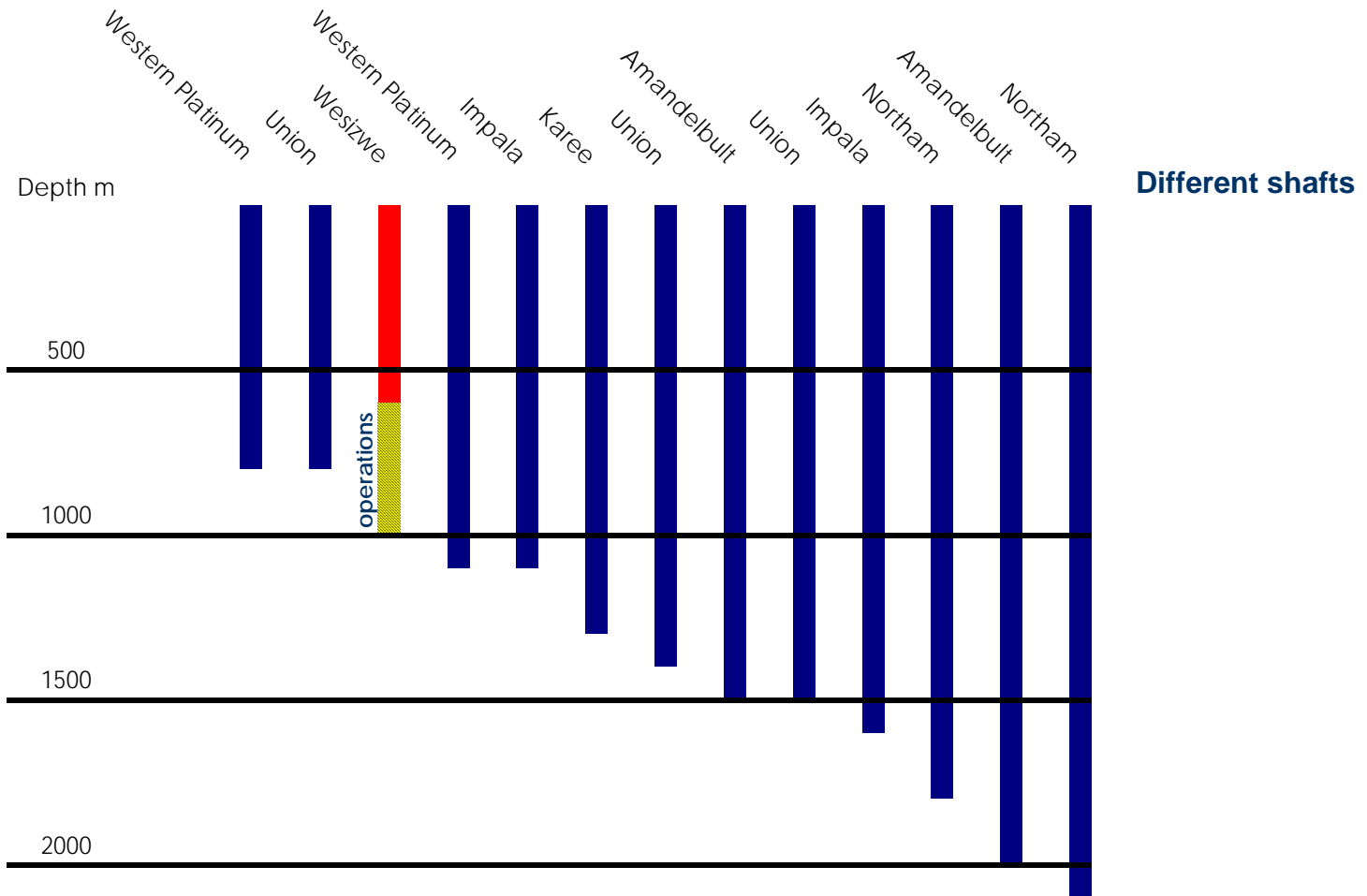


- Depth *800m average*
- Resources *68 m tons x 11,2 moz (6,9 attributable)*
- Grade *5,1 g/t average*
- LOM *25-35 years*
- Production *180 000 tpm*
- Shafts *Twin Vertical 8,5 m M&M + 6,5 m Vent*
- Mining Method *Hybrid mechanised*

Depth of operations: shallow relative to peers



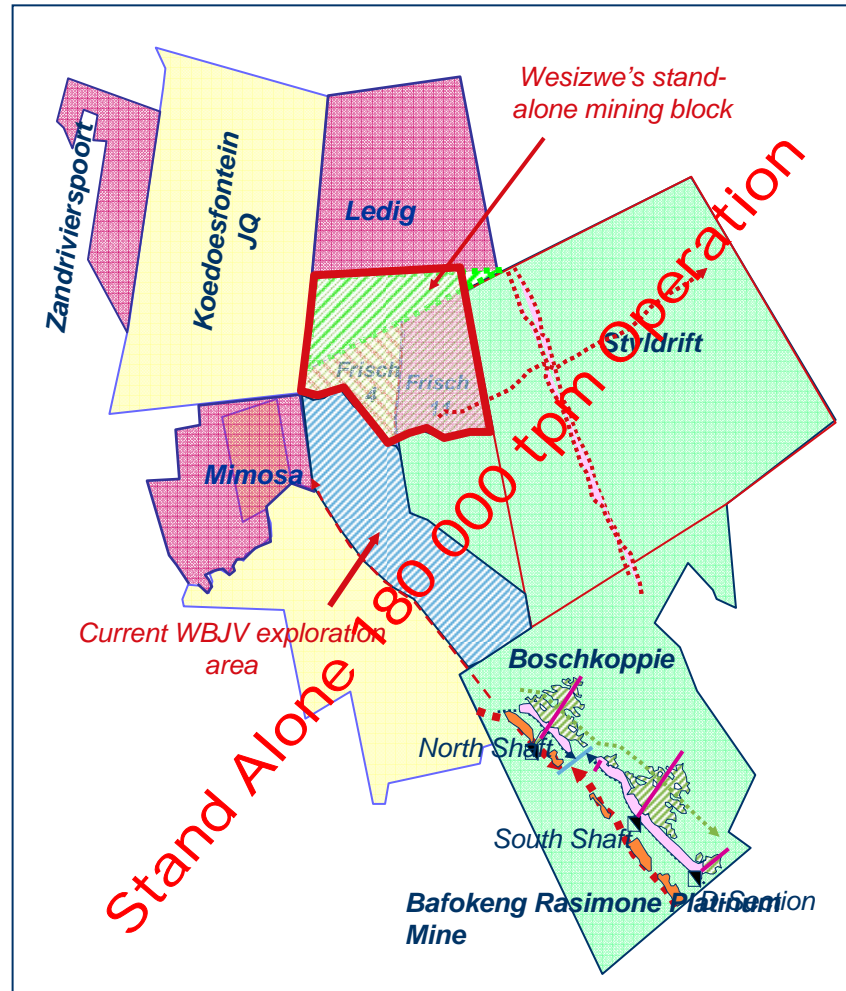
wesizwe



The Base Case



wesizwe



- Wesizwe
- Platinum Group Metals/WB JV
- Anglo Platinum/BRPM JV

Wesizwe's base case is a standalone operation.

The Community Investment Model in Wesizwe Platinum is Unique



w e s i z w e



- The investment model for the Bakubung Ba Ratheo is completely unique in South Africa and probably the rest of the world;
- It has taken the community from being a poverty stricken community in January 2005 to having a balance sheet value of US\$120 million (R830 million) by January 2005;
- This value will be collateralized to fund non-mining economic development;
- Funding for commercial projects, primarily in the tourism, agriculture, property and infrastructure development sectors will be sought from the State-owned Development Finance Institutions (DFIs) such as the Industrial Development Corporation (IDC), the Development Bank of South Africa (DBSA) and the National Empowerment Fund (NEF);
- Complementary assistance will also be sought from donor agencies such as USAID;
- The community is now financially viable in its own right and the effort will now be placed on diversifying and growing the core investment in order to make it sustainable.

The Community Trust and Investment Structures



w e s i z w e



Wesizwe Platinum

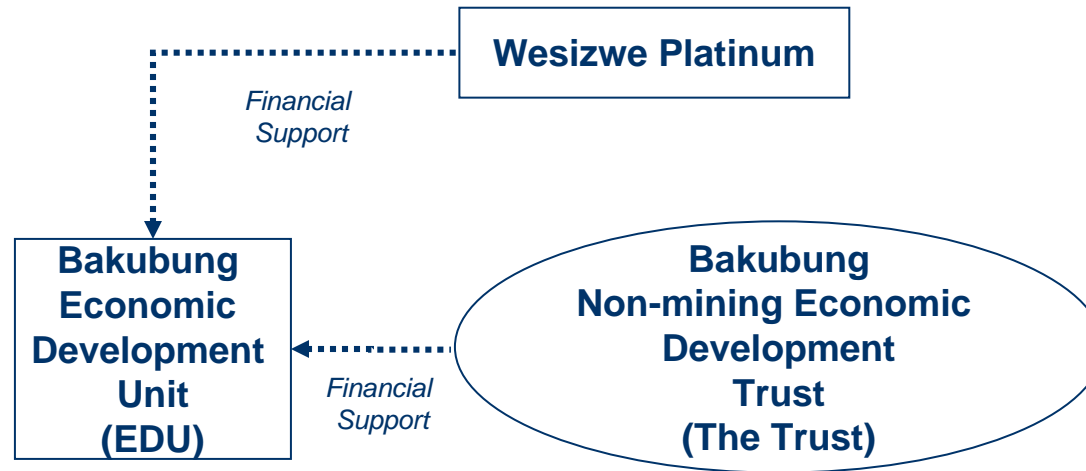
R10 million

Bakubung
Development
Trust

The Community Trust and Investment Structures



wesizwe



The Community Trust and Investment Structures



wesizwe



**Bakubung
Economic
Development
Unit
(EDU)**

*Financial
Support*

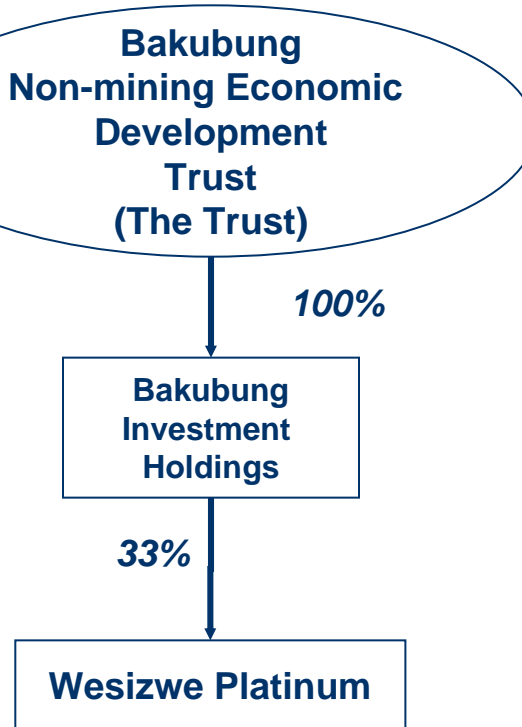
**Bakubung
Non-mining Economic
Development
Trust
(The Trust)**

100%

**Bakubung
Investment
Holdings**

33%

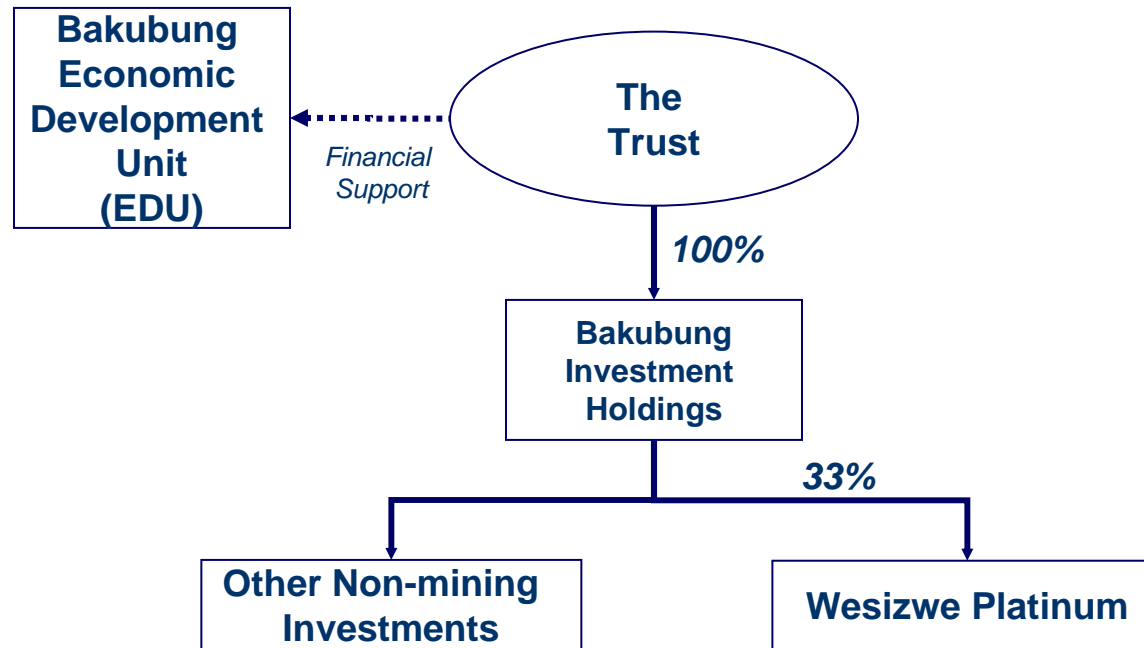
Wesizwe Platinum



The Community Trust and Investment Structures



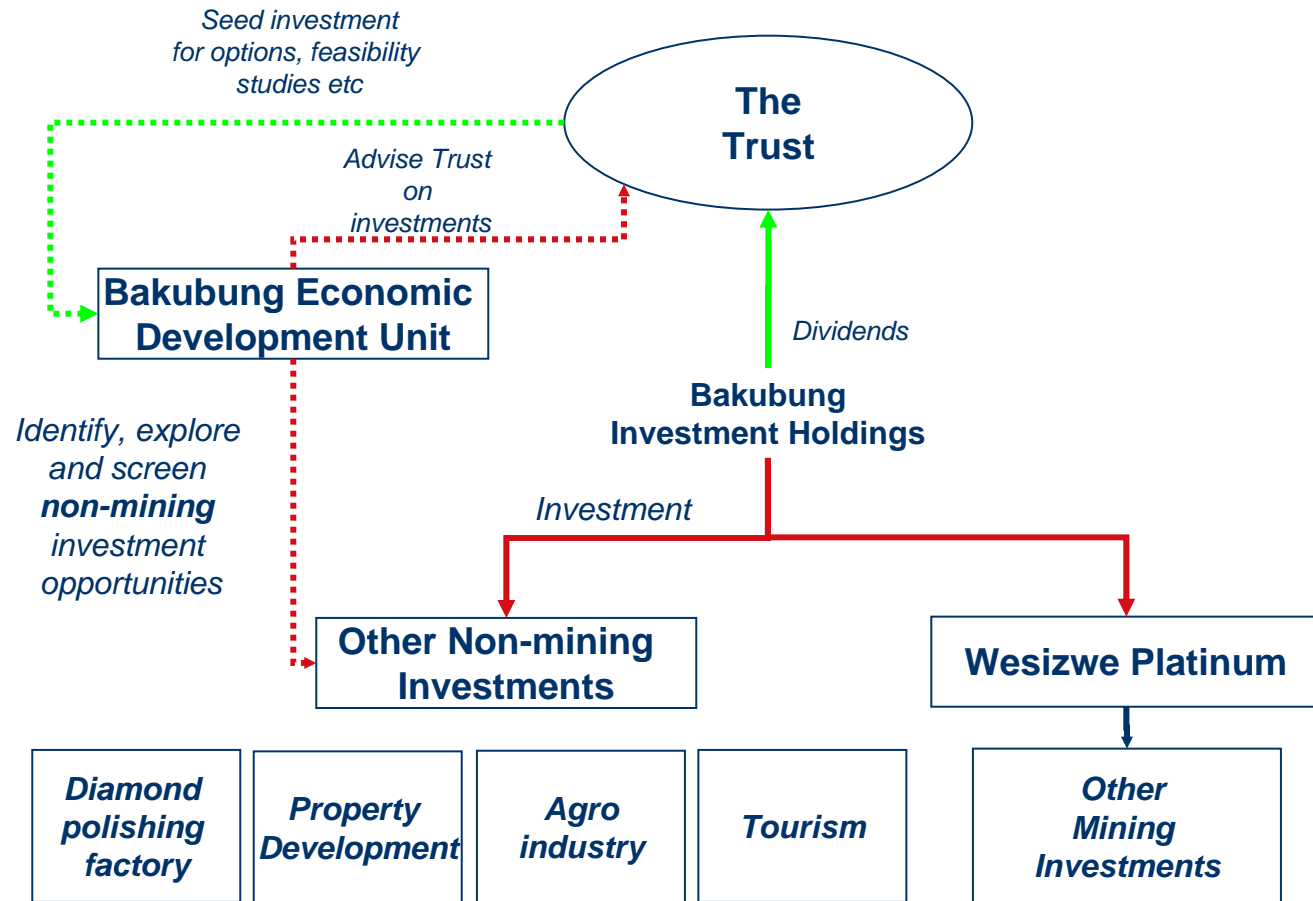
wesizwe



Community Investment Model



wesizwe



Conclusion



w e s i z w e

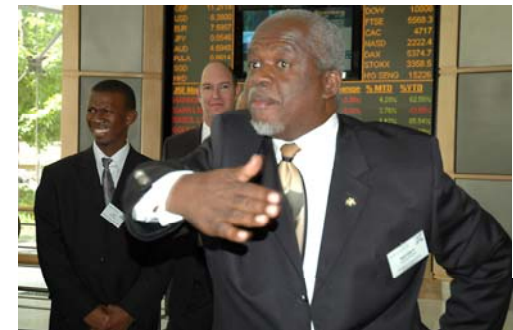


- The Wesizwe Platinum exploration and mining project is a flagship project in Community Empowerment and Economic Development for the Moses Kotane Municipality;
- The project was structured and launched in close cooperation and with invaluable assistance with and close support of the Executive Mayor of Moses Kotane, Clr Peter Molelekeng;
- The Bakubung Ba Ratheo's community's investment in Wesizwe is critical not only to its longer term economic development, but that of the Moses Kotane Local Municipality;
- Once the mine is commissioned, it will produce 200-300 thousand ounces of platinum a year and employ over 2 500 people from the Municipality;
- With dependencies of approximately 5:1, this represents a livelihood to over 10 000 people;
- *Apart from being an attractive investment in its own right, an investment in Wesizwe is an investment in the future of the Bakubung Ba Ratheo Community and the Moses Kotane Local Municipality.*

Listing on the JSE on 21 December 2005



wesizwe



Bakabung-Ba-Ratheo Community Meetings with Wesizwe



wesizwe



Ledig



wesizwe



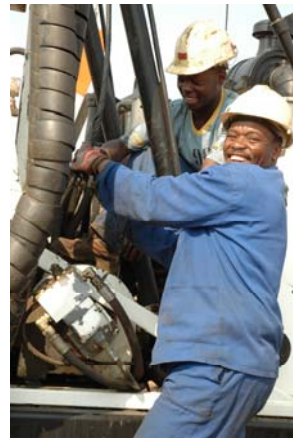
Royal Bakubung Tribe
Bakubung-Ba-Ratheo



Wesizwe drilling



wesizwe





wesizwe



the
new name
in
platinum

wesizwe

www.wesizwe.com

For further information on Wesizwe please contact Michael Solomon, CEO, on +27 83 267 1849 or email on solomon@wesizwe.com or visit the website at www.wesizwe.com

Disclaimer



w e s i z w e



The information in this document (this “Document”) is for information purposes only. This Document will form part of a verbal briefing by members of Wesizwe Platinum Limited and cannot be relied on or used in isolation therefrom. This Document does not constitute an offer of any kind or a solicitation of an offer and does not imply that information contained herein is correct as of any time subsequent to the date of issue. You are to rely on your own independent appraisal of and investigations into all matters and things contemplated by this Document.

Whilst every care has been taken in preparing this Document, no representation, warranty or undertaking (express or implied) is given as to the accuracy, completeness or reasonableness of the information or statements contained herein and no responsibility or liability whatsoever is accepted by Wesizwe Platinum Limited for any direct or consequential loss resulting from the use of this Document.

All opinions and estimates contained in this Document may be changed after publication at any time without notice.

This document has been provided to you for your information only and may not be reproduced or redistributed to any other person. By accepting this document, you agree to be bound by the foregoing limitations.